

**WIRELESS NETWORKING  
LIKE NO OTHER**

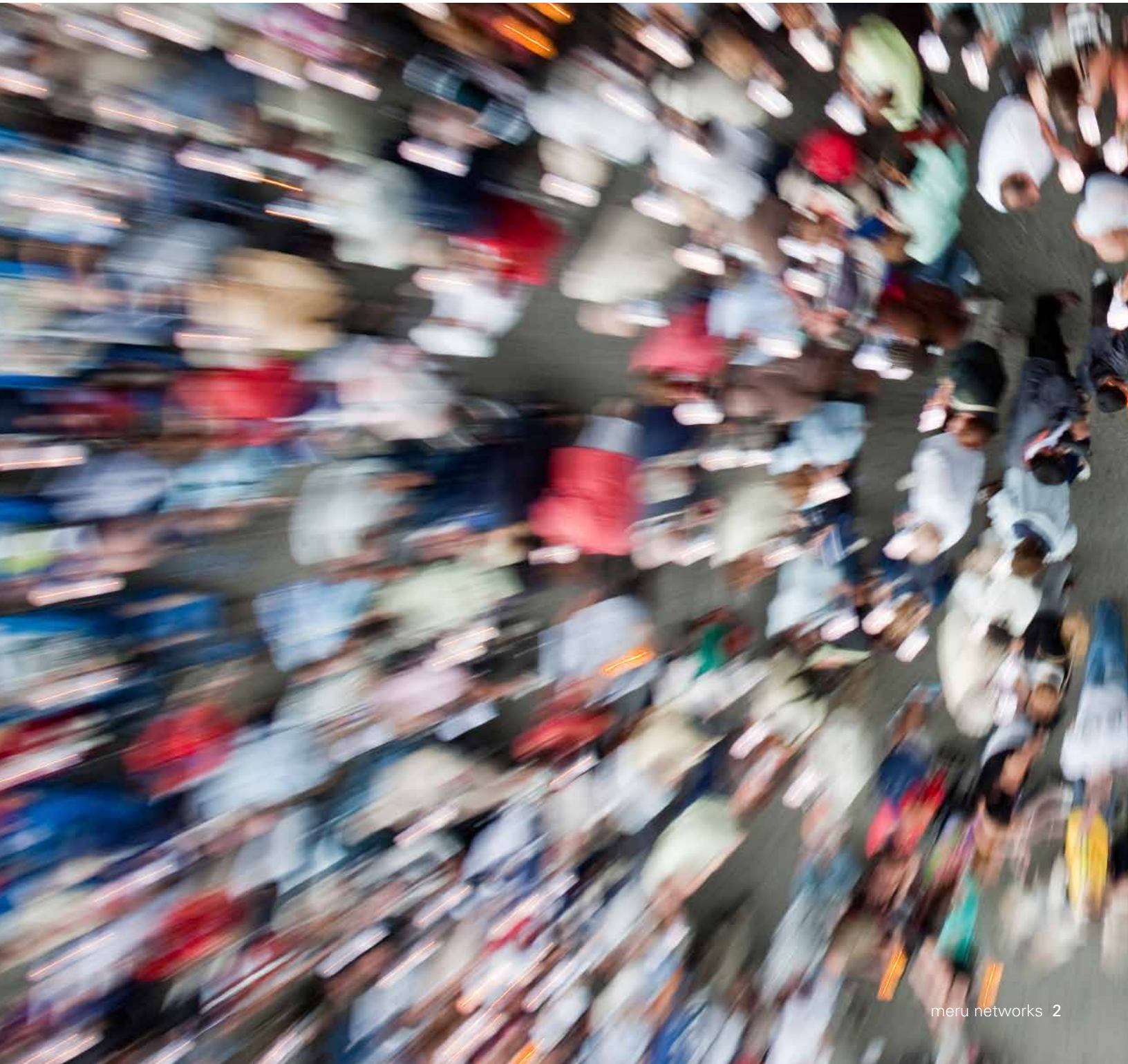


**YOUR BEST CHOICE FOR BUSINESS-CRITICAL ANYTHING.  
RUN REAL-TIME VOICE, DATA, AND VIDEO APPLICATIONS  
WITH NO HESITATION.**



# 99.99% AVAILABILITY ASSURANCE.

Meru's 99.99% wireless availability service assurance program is why thousands of customers' mission-critical applications and services are delivered over our wireless networks. Deliver what your users need, **confidently**.

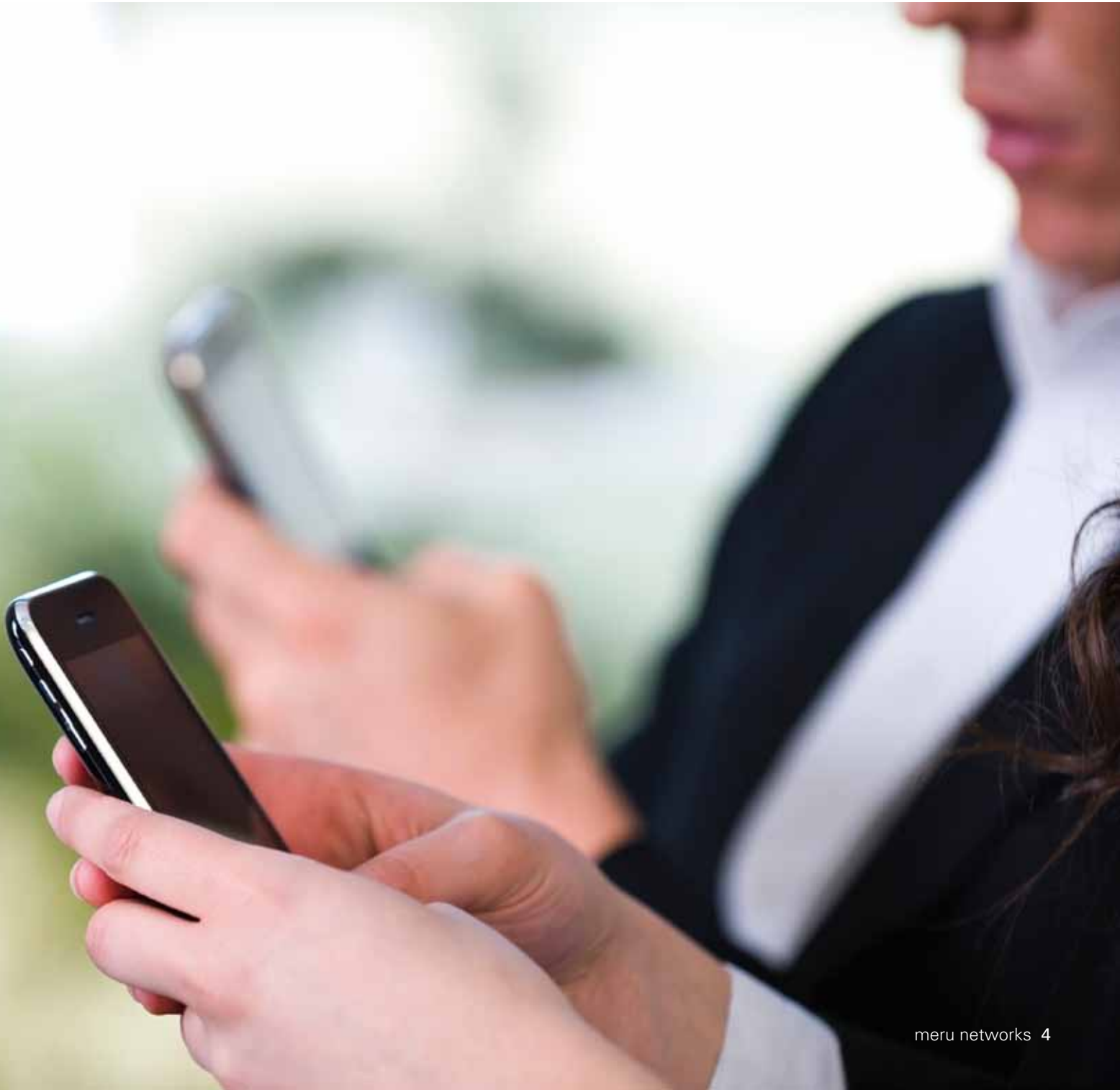


**NO COMPLICATED DEPLOYMENTS.  
NO RIGID ARCHITECTURES.  
NO FUTURE LIMITATIONS.**



# UP TO A 2:1 COST BENEFIT OVER TRADITIONAL WIRELESS LANS.

Our patented, standards-based technology gives you the same coverage with up to 30% fewer access points. A centralized location, security, and diagnostic services dashboard means it only takes one person to manage deployments that previously required four to six people. And with the Meru Wireless Service Assurance program, even that person gets a day off occasionally.



**AN INCOMPARABLE USER EXPERIENCE.  
NO KIDDING.**



# ASSURED PERFORMANCE AND TOLL-QUALITY VOICE.

Say hello to toll-grade voice quality. Say goodbye to dropped calls. And gain seamless roaming with full application performance and quality of service. **No more frustrated users.**



**WHICH IS WHY  
THOUSANDS OF REAL  
CUSTOMERS HAVE SAID  
YES TO MERU NETWORKS**



**MERU VIRTUALIZED WIRELESS NETWORKS ARE CHANGING HOW ENTERPRISES VIEW AND USE WIRELESS NETWORKS. WITH:**

- **MISSION-CRITICAL APPLICATION AVAILABILITY**
- **LOWER COST OF WIRELESS LAN OWNERSHIP**
- **AN INCOMPARABLE USER EXPERIENCE**
- **NO DROPPED CALLS**
- **DEPLOYMENT WITHIN HOURS OR DAYS**

**MAKING A CHANGE DOES NOT REQUIRE A LEAP OF FAITH. OUR CUSTOMERS HAVE HAD EXPERIENCE WITH TRADITIONAL WIRELESS NETWORKS. AND ALL OF THEM REPLACED THOSE NETWORKS WITH A MERU VIRTUALIZED WIRELESS NETWORK. OUR PATENTED INNOVATION BUILDS ON INDUSTRY STANDARDS—TO SET NEW PERFORMANCE STANDARDS.**

**IT'S TIME TO SAY **YES** TO SERIOUS WIRELESS.**



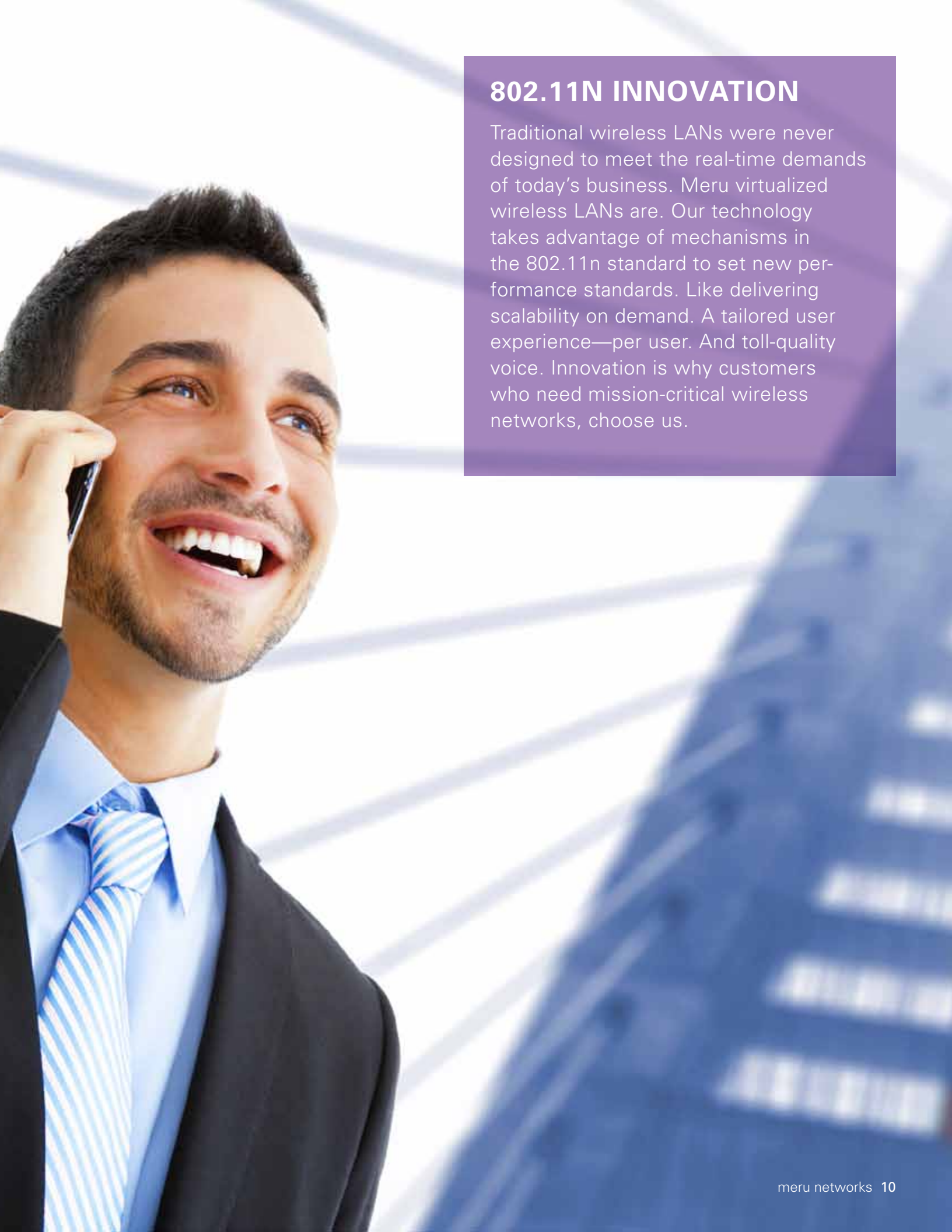
## NO MORE WIRELESS AS USUAL

Meru's commitment to next-generation wireless standards is so strong that we bet our business on it. Our innovative technology completely changes how wireless networks operate.

**A New Point of View on Control** Technically speaking, we developed a switched, virtual cell architecture with "air traffic control" technology that lives in the network instead of each access point. Practically speaking, because the network automatically manages everything, users can go anywhere, always with the voice quality and application performance they need.

**Less is More** Our virtual cell architecture is simpler, eliminating the problems associated with co-channel interference and the need to fine-tune power for each access point. Access points operating at full power mean you need up to 30% fewer—and the only things that drop are your capital and operating expenses.

**Security at Every Level** We build in security from Layer 1 to Layer 7 of our networks to defend you from perimeter, connection, network, and remote threats. Continuous airspace scanning prevents intruders, even while delivering real-time traffic.



## 802.11N INNOVATION

Traditional wireless LANs were never designed to meet the real-time demands of today's business. Meru virtualized wireless LANs are. Our technology takes advantage of mechanisms in the 802.11n standard to set new performance standards. Like delivering scalability on demand. A tailored user experience—per user. And toll-quality voice. Innovation is why customers who need mission-critical wireless networks, choose us.

A woman with long brown hair and a young girl with braided hair are looking at a laptop screen. The woman is smiling and looking at the screen, while the girl is looking down at the screen. In the background, another person is visible at a computer monitor.

## THE COST OF OPPORTUNITY

Meru virtualized wireless LANs are proven to deliver lower total cost of ownership than legacy wireless LANs. That's important, but there is more. As wireless networks become critical—not just convenient—our flexibility and scalability can help you respond quickly to new opportunities that can change your company's future.



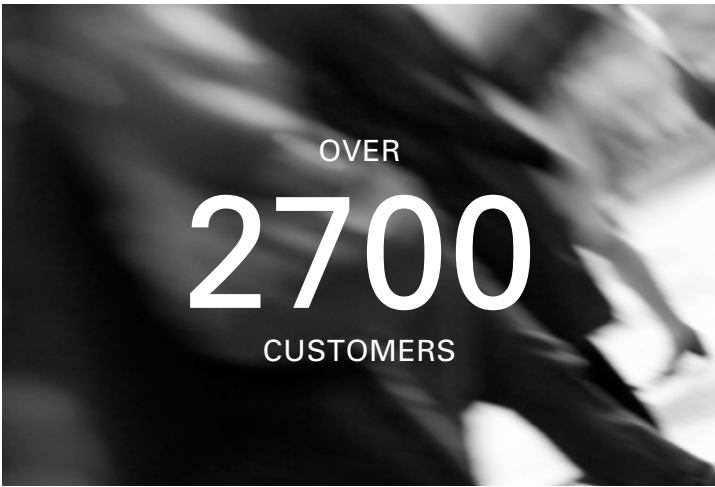
## INNOVATION BEYOND JUST THE TECHNOLOGY

When you compare legacy wireless LANs with Meru virtualized wireless LANs, there is no comparison. Meru customers are surprised—and delighted—with the advantages they gained long after their networks were deployed.

**How soon do you need it?** Our customers avoid expensive, time-consuming RF surveys. Installing access points and deploying the network requires just a matter of hours, instead of months followed by weeks of ongoing tuning.

**A ladder-less network** Our simple architecture makes it equally simple to deploy new technologies, such as bar code readers, patient monitoring devices, or mobile applications. No more re-engineering the network every time a new capability is needed. You can put the ladders away and leave your ceilings and walls intact.

**It just takes one** Security and management capabilities are already integrated in a Meru network. One person can manage a large wireless LAN deployment from the office—or from anywhere in the world using a smartphone.



# OUR CUSTOMERS: WHEN IT'S MISSION-CRITICAL, IT RUNS ON A MERU NETWORK

### Healthcare

We support thousands of clinicians and administrators across hospitals, clinics, and primary care facilities as they monitor patients, deliver medications, review lab and diagnostic results, manage clinical assets, and improve the patient experience.

### Education

Primary, secondary, and higher education institutions rely on Meru wireless LANs for preparing the next generation of mobile, connected students. Our networks support 1:1 learning through real-time, rich-media classrooms, as well as improve staff communication and school safety.

### Manufacturing & Industry

Manufacturing and industrial plants are tough radio environments, full of device interference challenges and harsh physical conditions. Meru industrial customers have highly reliable "everywhere connectivity" for workers on the move, as well as for critical security applications.

### Public Sector

Government agencies are continuously challenged to deliver more services while reducing costs, and communication is critical for decision-making. Meru helps agencies meet these conflicting goals with the highest wireless LAN performance at a low cost of ownership.

### Logistics

Ports, depots, and transportation stations are designed for one thing—efficiently moving people or cargo. They are also harsh environments for most wireless networks. Not Meru. We keep data and voice communications flowing to improve efficiency, quality control, and customer service for global logistics customers.

### Hospitality

Blanket your guest rooms, conference facilities, and office locations with reliable wireless coverage. Our customers are delivering higher levels of guest satisfaction, improving staff communication, increasing security, and reducing operating costs.

### Retail

Whether they sell grocery, apparel, or consumer goods, retailers know that profitability depends on their customers' experience. From the distribution center to the store shelf, Meru supports critical voice, video, and data communications, even in converged fixed-mobile environments.


### Financial Services

In financial services, milliseconds count and communication is critical to high-dollar decisions. Meru wire-less LANs support the most critical trading environments with efficient roaming and handoffs to help customers increase revenue, reduce LAN costs, and minimize decision risk.

# TRY US

AT NO CHARGE. WITH NO DISRUPTION. AND WITHOUT FEAR. GIVE US YOUR BEST SHOT. AND BE SURE TO INVITE OUR COMPETITORS.

CONTACT US AT [+1.408.215.5300](tel:+14082155300) OR VISIT [WWW.MERUNETWORKS.COM](http://WWW.MERUNETWORKS.COM)



Ranks at the highest level in  
WLAN customer satisfaction  
**Aberdeen Research Study 2009**

Reliably outperforms  
competitors by up to 67%  
**Novarum, 2009**



## MERUNETWORKS.COM

### Meru Networks US Corporate

Corporate Headquarters  
894 Ross Drive  
Sunnyvale, CA 94089  
United States  
T +1 (408) 215-5300  
F +1 (408) 215-5301  
E [info@merunetworks.com](mailto:info@merunetworks.com)

### Meru Networks India Pvt. Ltd.

"Adarsh Crystal"  
#16/3, Ground Floor  
Cambridge Road  
Cambridge Layout  
(Opp. Frank Anthony School)  
Bangalore – 560 008  
T +91 80 66961000  
F +91 80 66961082  
E [info.india@merunetworks.com](mailto:info.india@merunetworks.com)

### Meru Networks UK

Knyvett House, The Causeway  
Staines  
Middlesex  
TW18 3BA  
United Kingdom  
T +44 208 819 6453  
E [info.emea@merunetworks.com](mailto:info.emea@merunetworks.com)

### Meru Networks Nordics

North & Eastern Europe  
Stureplan 4 C, 4th floor  
114 35 Stockholm  
Sweden  
T +46 8 50 90 12 83  
F +46 8 50 90 13 10  
E [info.nordics@merunetworks.com](mailto:info.nordics@merunetworks.com)

### Meru Networks MEA

G01-6WA, West Wing, Building 6, Block A  
Dubai Airport Free Zone  
Dubai, UAE  
T +971 4 2146057  
F +971 4 2146059  
E [info.mea@merunetworks.com](mailto:info.mea@merunetworks.com)

### Meru Networks Japan

6F Nishizawa Bldg.  
Uchikanda 3-14-8 Chiyoda-ku  
Tokyo 101-0047  
T +81 3 5297 1221  
F +81 3 5297 1222  
E [info.jp@merunetworks.com](mailto:info.jp@merunetworks.com)

### Meru Networks Korea

KyungAn Building Suite 602, 769-12  
Yeoksam-don, Kangnam-ku  
Seoul 135-080  
Korea  
T +82 2 365 6252  
F +82 2 365 6254  
M +82 10 7637 7999  
E [info.korea@merunetworks.com](mailto:info.korea@merunetworks.com)

### Meru Networks Australia

Level 1  
483 Riley Street  
Surry Hills NSW 2010  
Australia  
T +61 2 9872 5184  
M +61 433 982 532  
E [info.australia@merunetworks.com](mailto:info.australia@merunetworks.com)

### Meru Networks China

Suite 1901, Level 19, Tower E2  
Oriental Plaza  
1st East Chang An Ave.  
Dongcheng District  
Beijing 100738, P.R. China  
T +86 10 8520 0463  
F +86 10 8520 0473  
E [info.china@merunetworks.com](mailto:info.china@merunetworks.com)

**About Meru Networks** | Founded in 2002, Meru Networks provides a virtualized wireless LAN solution that cost-effectively optimizes the enterprise network to deliver the performance, reliability, predictability and operational simplicity of a wired network, with the advantages of mobility. Meru's solution represents an innovative approach to wireless networking that utilizes virtualization technology to create an intelligent and self-monitoring wireless network, and enables enterprises to migrate their business-critical applications from wired networks to wireless networks, and become all-wireless enterprises. Meru's solutions have been adopted in all major industry vertical markets, including Fortune 500 enterprises, healthcare, education, retail, manufacturing, hospitality and government. Meru is headquartered in Sunnyvale, Calif., and has operations in the Americas, Europe, the Middle East and Asia Pacific. For more information, visit [www.merunetworks.com](http://www.merunetworks.com) or call 408.215.5300.